



CUPPING SET

PRODUCT & USER GUIDE

ABOUT THIS PRODUCT



Meridius cupping sets are available in two variations: 10 pieces and 17 pieces. They come in a navy-blue case with a firm handle which is ideal for travelling and storage.

The cupping sets are extremely versatile due to the large number of cupping shapes and dimensions available. The ME17 set comes with an extra oval shape cup ideal for peri-spinal regions, curved bottom cup for the side of the body and triangle shaped cup for edged surfaces.

Additionally, the blue silicone valve can be detached from the cup for easy sterilization and maintenance.

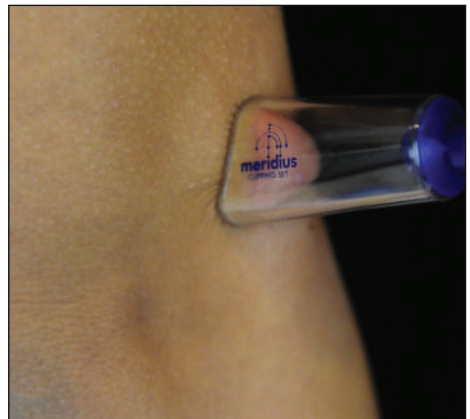
ABOUT THIS PRODUCT

Product characteristics

- >> **Detachable silicone valve** ensuring user friendly cleaning and sterilization;
- >> **Versatile shapes** to accommodate cupping application on all parts of the body;
- >> **Made of polycarbonate** material for enhanced durability;
- >> **Fire-free treatment** reducing the risk of burns;
- >> **Enhanced pressure accuracy** with use of the hand-held pistol pump.

Product benefits

- >> Cupping therapy is used to **stimulate the metabolism**;
- >> It helps with **blood circulation** and **oxygenation** in the treated area;
- >> Can be used during **massage sessions**;
- >> Enhances the **general sense of well-being**.



PRODUCT VARIATIONS



17 Pcs **Cupping Set**

ME17 set is an upgrade to the 10 piece set and adds a wider range of cup sizes and styles making it more versatile. Suitable for self cupping using the supplied extension tube.

CODE	PCS.	DIAMETER	SHAPE
ME17-R01	8	55 mm	Round
ME17-C02	1	43 mm	Contoured
ME17-C03	1	41 mm	Contoured
ME17-C04	1	34 mm	Contoured
ME17-R04	1	27 mm	Round
ME17-TR	1	23 mm	Triangle
ME17-OV1	1	72 mm	Contoured
ME17-C01	1	61 mm	Contoured
ME17-L01	1	50 mm	Round
ME17-L02	1	40 mm	Round



10 Pcs **Cupping Set**

Meridius 10 pcs is a compact, yet very versatile set. It features a range of 4 different size cups which can be used on most of the body.

CODE	PCS.	DIAMETER	SHAPE
ME17-R01	6	55 mm	Round
ME17-C02	2	43 mm	Contoured
ME17-C04	1	34 mm	Contoured
ME17-C01	1	61 mm	Contoured

SAFETY INFORMATION

- >> **Keep away** from children;
- >> If using for wet cupping, sterilize in **Autoclave ONLY**;
- >> **NOT** suitable for cleaning in a dishwasher;
- >> Contains **Silicone**;
- >> Take **extra care** if using during pregnancy.

Cupping massage

This cupping set can be used to massage all the body parts to improve blood circulation. Please apply massage oil or cream on the skin before the massage treatment, then move the cups along the desired area. No cream or oil is needed for cupping treatment.

Bruises or Red Marks

After cupping therapy, in some cases, a brown or red mark may be left where the cup was placed. This is perfectly normal and will gradually fade within a few days.

Sterilization

Please clean the cups using lukewarm soapy water. To sterilize please use the autoclave, especially after wet cupping. Please make sure you remove the silicone valves before sterilizing the cups.

**IF THE CUPS HAVE BEEN IN CONTACT WITH BLOOD, PLEASE STERILIZE ONLY
IN AUTOCLAVE OR DISPOSE OF THEM.**

HOW TO USE



1. Position the cup on the desired treatment area and hold it stable.



2. Use the pistol pump to create a vacuum.



3. Adjust the pressure level desired by slightly depressing the blue valve.



4. When the session is complete, press the blue valve all the way down to release the vacuum.

REPLACEMENT PARTS





For more information regarding Meridius products please contact us.

+44 (0)1392 829 133
info@meridiusmedical.com
www.meridiusmedical.com